

Mono-Crystalline



Multi busbar technology decreases the distance between main bus bars and finger grid lines which reduces electric current loss and benefit to power increase.



Multi busbar technology adopts a special round welding ribbon which effectively avoid solar cells cracks and micro cracks.



Sun Earth East solar modules are guaranteed to work for more than 25 years so as to guarantee investor's profit.

The modules are proved that the power depreciation is less than 20% after 25 years working.



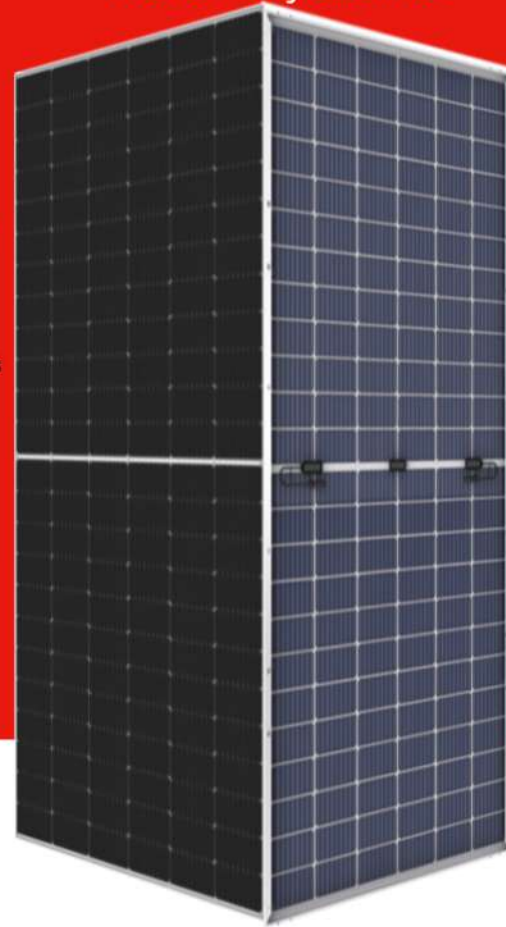
Superior loading capacity: snow pressure of 5400PA and wind pressure of 2400PA.



PID FREE.



Higher power output: Module power increases 5-25% generally, bringing significantly lower LCOE and higher IRR, The power tolerance of module is 0/+5W.



## M8 Hi-Eff Mono Half Bifacial Module With Dual Glass

**DXM8-72HBG 545W~565W**



# M8 Hi- Eff Mono Half Bifacial Module With Dual Glass

## DXM8-72HBG 545W~565W

### SPECIFICATIONS

	STC					NOCT				
	545W	550W	555W	560W	565W	545W	550W	555W	560W	565W
Rated Power (Pmax):	545W	550W	555W	560W	565W	406.86W	410.59W	417.44W	421.20W	424.96W
Maximum Power (Pmax):	545W	550W	555W	560W	565W	406.86W	410.59W	417.44W	421.20W	424.96W
Rated Voltage at Pmax (Vmp):	41.8V	41.9V	42.0V	42.1V	42.2V	39.37V	39.46V	39.47V	39.57V	39.66V
Rated Current at Pmax (Imp):	13.04A	13.13A	13.21A	13.30A	13.39A	10.49A	10.56A	10.59A	10.66A	10.73A
Open-circuit Voltage (Voc):	49.8V	49.9V	50.3V	50.5V	50.7V	46.61V	46.71V	47.73V	47.92V	48.11V
Short-circuit Current (Isc):	13.92A	13.99A	14.04A	14.11A	14.18A	11.26A	11.32A	11.35A	11.40A	11.46A
Module Efficiency (ηm):	21.1%	21.3%	21.5%	21.7%	21.9%					
Maximum System Voltage:						1500VDC				
Application Class:						Class A				
Fire Resistance Class:						Class C				
Maximum Over-Current Rating:						30A				
Operating Temperature:						85% Rh, -40°C ~ +85°C				
Maximum Snow Loads (front):						5400Pa				
Maximum Wind Loads (front & back):						2400Pa				
Maximum Hailstone Impact (diameter @ 23m/s):						25mm				

- STC: Irradiance 1000W/m<sup>2</sup>, Cell temperature 25°C, Air mass AM1.5 according to EN60904-3.
- NOCT: Irradiance 800W/m<sup>2</sup>, Ambient temperature 20°C/s, wind Speed 1m/s.
- Average efficiency reduction of 4.5% at 200W/ m<sup>2</sup> according to EN60904-1.

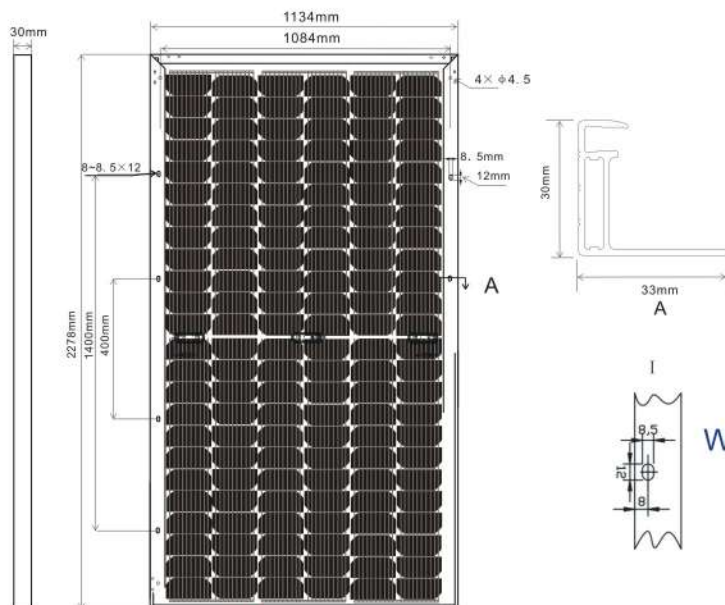
### Thermal Characteristics:

Nominal Operating Cell Temperature (NOCT):	45±2°C
Temperature Coefficient of Pmax (γ Pmp):	-0.35%/°C
Temperature Coefficient of Voc (β Voc):	-0.275%/°C
Temperature Coefficient of Isc (α Isc):	+0.045%/°C

### Construction Characteristics:

Front Cover:	Anti-Reflection Coating Glass/2.0mm
Back Cover:	Heat Strengthened Glass/2.0mm
Cell:	144 pcs mono-crystalline 182×91mm
Anodized aluminum alloy Frame:	■ silver ■ black
Junction Box (protection degree):	IP68
Cable (length/cross-sectional area):	(+) : 400mm, (-) : 300mm or Customized Length/4mm <sup>2</sup>
Connector (protection degree):	IP68
Module Dimension (L×W×H):	2278×1134×30mm
Weight:	32.0±3% kg

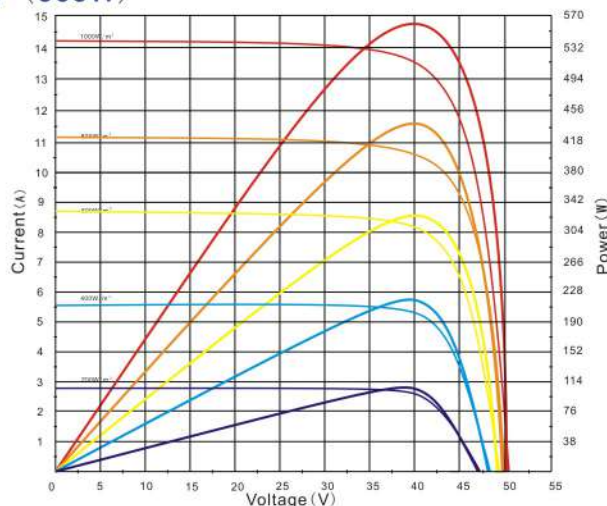
### Dimensions (tolerance ±2mm)



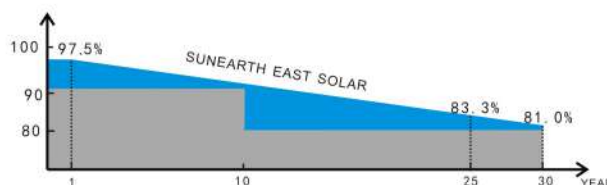
### Bifacial Output-Rearside Power Gain

5% Maximum Power (Pmax)	572W	578W	583W	588W	593W
Module Efficiency STC (%)	22.14%	22.37%	22.56%	22.76%	22.97%
15% Maximum Power (Pmax)	627W	633W	638W	644W	650W
Module Efficiency STC (%)	24.27%	24.50%	24.70%	24.93%	25.15%
25% Maximum Power (Pmax)	681W	688W	694W	700W	706W
Module Efficiency STC (%)	26.36%	26.63%	26.86%	27.10%	27.34%

### I-V (565W)



### Warranty:



Please refer to Sun Earth East Solar Product Warranty for details.

