



10BB technology decreases the distance between main bus bars and finger grid lines which reduces electric current lose and benefit to power increase.



10BB technology adopts a special round welding ribbon which effectively avoid solar cells cracks and micro cracks.



Sun Earth East solar modules are guaranteed to work for more than 25 years so as to guarantee investor's profit. The modules are proved that the power depreciation is less than 20% after 25 years working.



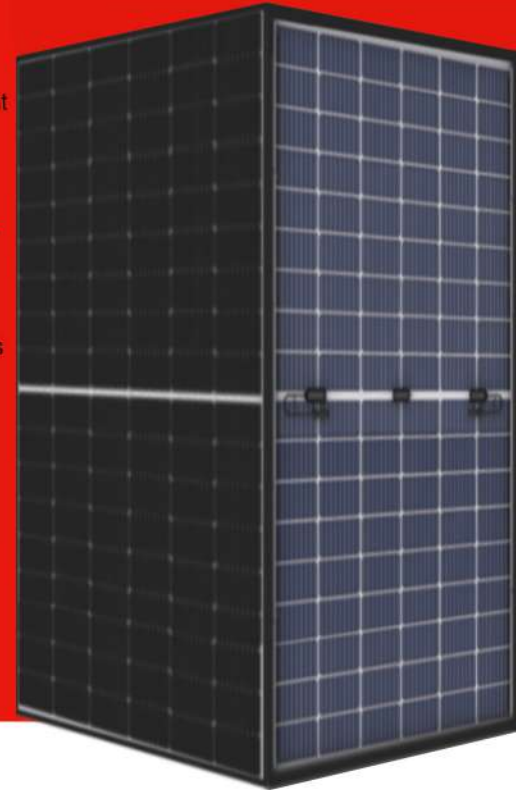
Superior loading capacity: snow pressure of 5400PA and wind pressure of 2400PA.



PID FREE.



Higher power output: Module power increases 5~25% generally, bringing significantly lower LCOE and higher IRR, The power tolerance of module is 0/+5W.



M8 Hi-Eff Mono Half Bifacial Module With Dual Glass

DXM8-54HBG 410~420W



M8 Hi- Eff Mono Half Bifacial Module With Dual Glass

DXM8-54HBG 410~420W

SPECIFICATIONS

| | STC | | NOCT | |
|--|-----------------------|--------|---------|---------|
| | 410W | 420W | 410W | 420W |
| Rated Power (Pmax): | 410W | 420W | 410W | 420W |
| Maximum Power (Pmax): | 410W | 420W | 310.16W | 319.94W |
| Rated Voltage at Pmax (Vmp): | 31.3V | 31.4V | 28.88V | 28.97V |
| Rated Current at Pmax (Imp): | 13.10A | 13.22A | 10.74A | 10.83A |
| Open-circuit Voltage (Voc): | 37.4V | 37.5V | 34.98V | 35.07V |
| Short-circuit Current (Isc): | 13.92A | 13.99A | 11.32A | 11.38A |
| Module Efficiency (ηm): | 21.0% | 21.3% | | |
| Maximum System Voltage: | 1500VDC | | | |
| Application Class: | Class A | | | |
| Fire Resistance Class: | Class C | | | |
| Maximum Over-Current Rating: | 20A | | | |
| Operating Temperature: | 85% Rh, -40°C ~ +85°C | | | |
| Maximum Snow Loads (front): | 5400Pa | | | |
| Maximum Wind Loads (front & back): | 2400Pa | | | |
| Maximum Hailstone Impact (diameter @ 23m/s): | 25mm | | | |

- STC: Irradiance 1000W/m², Cell temperature 25°C, Air mass AM1.5 according to EN60904-3.
- NOCT: Irradiance 800W/m², Ambient temperature 20°C/s, wind Speed 1m/s.
- Average efficiency reduction of 4.5% at 200W/m² according to EN60904-1.

Thermal Characteristics:

| | |
|--|------------|
| Nominal Operating Cell Temperature (NOCT): | 45±2°C |
| Temperature Coefficient of Pmax (γ Pmp): | -0.35%/°C |
| Temperature Coefficient of Voc (β Voc): | -0.275%/°C |
| Temperature Coefficient of Isc (α Isc): | +0.045%/°C |

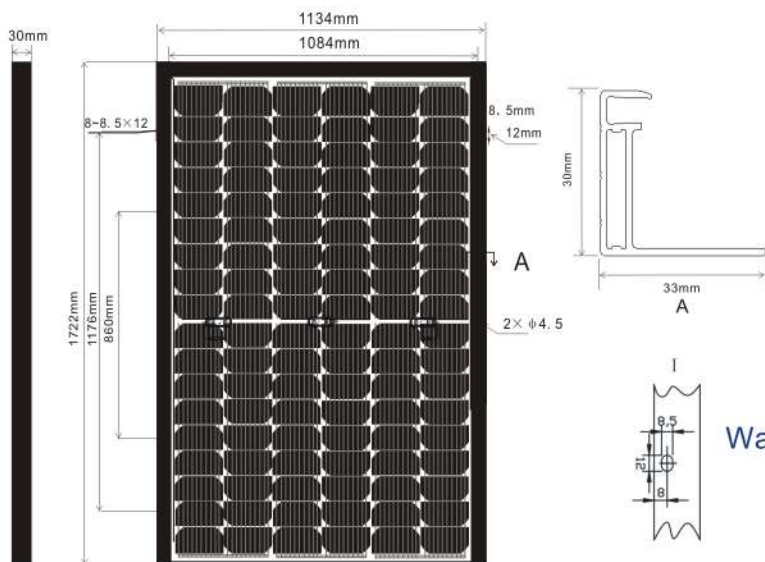
Bifacial Output-Rearside Power Gain

| | | |
|---------------------------|--------|--------|
| 5% Maximum Power (Pmax) | 431W | 436W |
| Module Efficiency STC (%) | 22.05% | 22.31% |
| 15% Maximum Power (Pmax) | 472W | 477W |
| Module Efficiency STC (%) | 24.15% | 24.44% |
| 25% Maximum Power (Pmax) | 513W | 519W |
| Module Efficiency STC (%) | 26.25% | 26.57% |

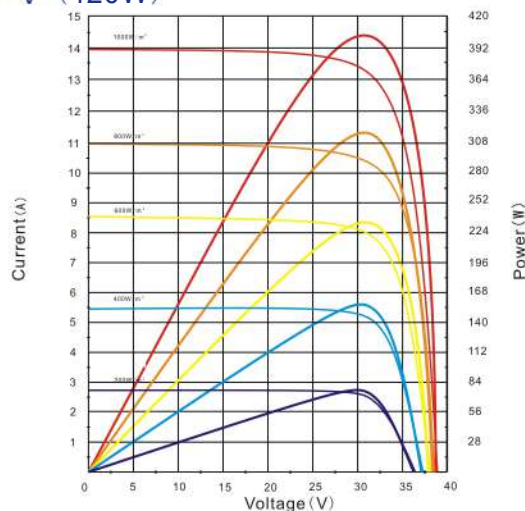
Construction Characteristics:

| | |
|--------------------------------------|---|
| Front Cover: | Anti-Reflection Coating Glass/2.0mm |
| Back Cover: | Heat Strengthened Glass/2.0mm |
| Cell: | 108 pcs mono-crystalline 182×91mm |
| Anodized aluminum alloy Frame: | ■ silver ■ black |
| Junction Box (protection degree): | IP68 |
| Cable (length/cross-sectional area): | (+) : 400mm, (-) : 300mm or Customized Length/4mm ² |
| Connector (protection degree): | IP68 |
| Module Dimension (L×W×H): | 1722×1134×30mm |
| Weight: | 21.0±3% kg |

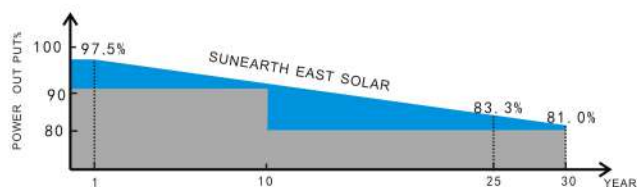
Dimensions (tolerance ±2mm)



I-V (420W)



Warranty:



Please refer to Sun Earth East Solar Product Warranty for details.

